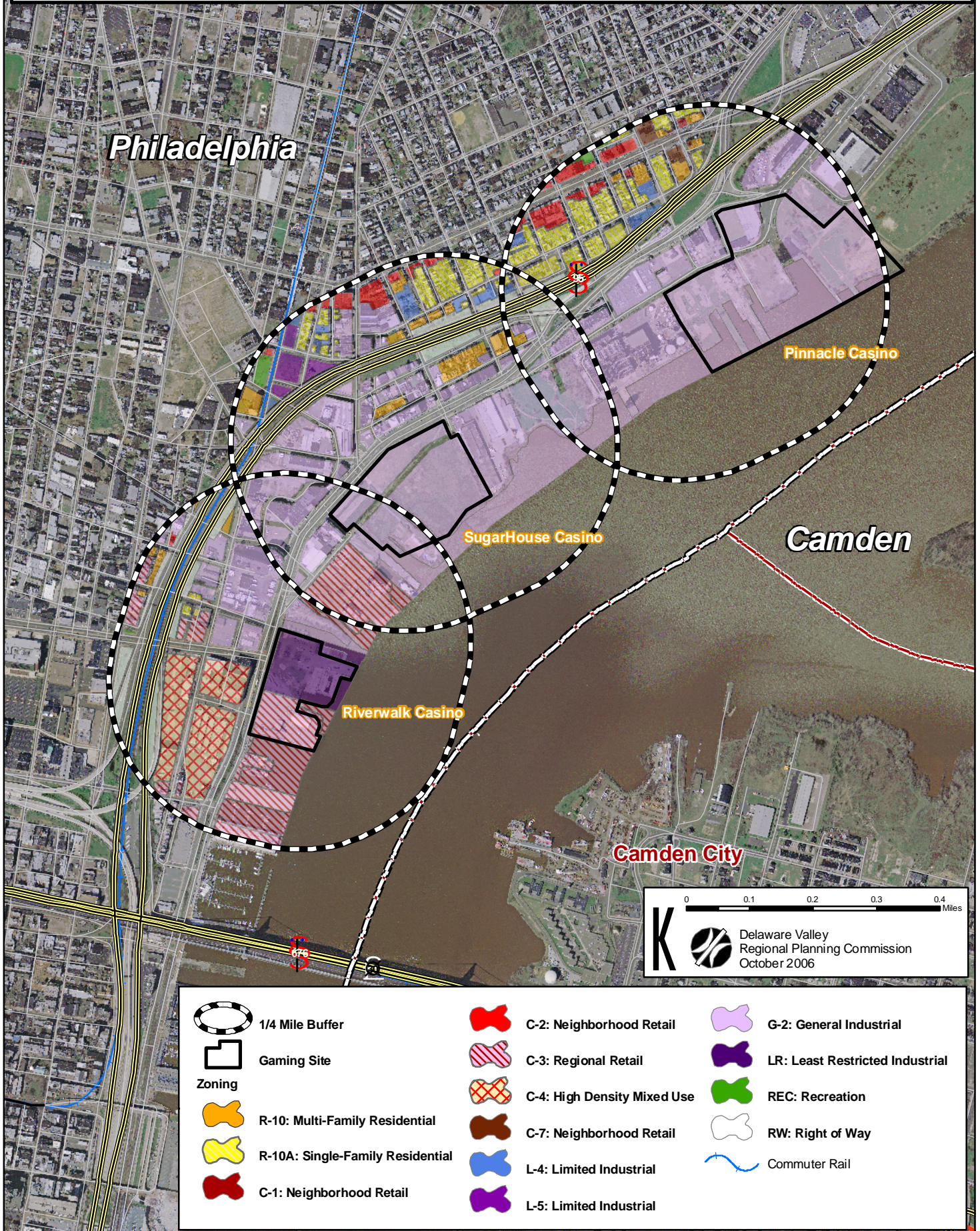


# Impacts of Gaming in Greater Philadelphia

## Map 12: North Delaware Zoning



0 0.1 0.2 0.3 0.4 Miles

**K** Delaware Valley Regional Planning Commission  
October 2006

	1/4 Mile Buffer		C-2: Neighborhood Retail		G-2: General Industrial
	Gaming Site		C-3: Regional Retail		LR: Least Restricted Industrial
<b>Zoning</b>			C-4: High Density Mixed Use		REC: Recreation
	R-10: Multi-Family Residential		C-7: Neighborhood Retail		RW: Right of Way
	R-10A: Single-Family Residential		L-4: Limited Industrial		Commuter Rail
	C-1: Neighborhood Retail		L-5: Limited Industrial		